



Sustainable furniture from recycled plastic waste through innovation and design.





R-48 DESIGN: BENDT WINGE

Delivered as 4-legs chair with shell in Ocean colours, with or without fabric in seat and back and with lacquered frame.



Beat DESIGN: STIAN BRINCH SKAARA AND BASTIAN JUUL ANDERSEN

Delivered with seat height 45 and 64 cm, in Ocean colours.



S-1500 DESIGN: SNØHETTA

1500 grams of plastic waste from fish farming industry is used to make this chair. Available in all Ocean colours.

Delivered with 4-legs-, sledge- or barstool frame.



Public DESIGN: ANDERSSSEN & VOLL

Delivered with 4-legs frame, sledge frame, Z-frame, barstool frame or wheel base. Shell in all Ocean colours, with or without fabric in seat/back and with lacquered frame.

Ocean colour palette

Plastic shells are produced of recycled plastic waste from the Norwegian fish farming industry. We named it Ocean palette because the structure of the colours is inspired by the sea

Plastic shell colours



Ocean green



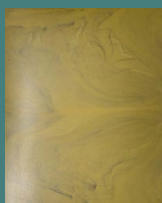
Ocean blue



Ocean navy blue



Ocean olive green



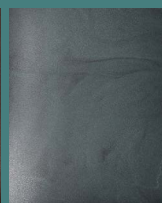
Ocean yellow



Ocean red

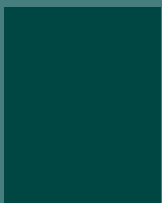


Ocean brown



Ocean black

Matching frame colours



RAL 6004
Blue green



RAL 5001
Green blue



RAL 9005
Jet black



RAL 6003
Olive green



RAL 1020
Olive yellow



RAL 8012
Red brown



RAL 8017
Chocolate brown



RAL 9005
Jet black



ncp.no